



**SWAT (9-12TH GRADE)**  
**1450 OAKRIDGE ROAD, NEENAH, WI 54956**  
**920-725-3896**  
**WWW.CBCNEENAH.ORG**

**MICHAEL HANSEN**  
**ASSOC. PASTOR OF STUDENT MINISTRIES**  
**MHANSEN@CBCNEENAH.ORG (920)277-7305**

**DANA REMINGTON**  
**ADMIN ASST. TO STUDENT MINISTRIES**  
**DREMIN@CBCNEENAH.ORG (920)284-6058**

# PARENT'S GUIDE TO SWAT 2020

STUDENTS WITH A TESTIMONY



# Swat Vision

OUR VISION AT CALVARY BIBLE CHURCH IS MAKING DISCIPLES TOGETHER.

SWAT IS AN ACRONYM FOR STUDENTS WITH A TESTIMONY. EVERY DISCIPLE OF JESUS HAS A STORY. IT IS OUR VISION THAT EACH HIGH SCHOOL STUDENT EXPERIENCES THEIR OWN STORY OF FOLLOWING JESUS. SO MUCH SO THAT THEY WANT OTHERS TO EXPERIENCE THE SAME.

SO WHAT MARKS A DISCIPLE OF JESUS?

A DISCIPLE IS...

**MISSIONAL**: THEY GO AND SHARE GOD'S STORY!

**ACCOUNTABLE**: THEY PURSUE HOLINESS.

**REPRODUCIBLE**: THEY INVITE OTHERS TO JOIN.

**COMMUNAL**: THEY GO THROUGH LIFE TOGETHER.

**SCRIPTURAL**: THEY SEEK TO KNOW GOD.

IT IS OUR DESIRE TO SEE THE **MARCS** OF A DISCIPLE IN EVERY HIGH SCHOOL STUDENT THAT JOINS OUR SWAT FAMILY.



WE'RE HEADED TO  
LAKE  
MICHIGAN ON  
TUES. AUG 18.  
COST IS FREE!







# MISSION TRIPS

MISSION TRIPS ARE AMAZING, LIFE-ALTERING EXPERIENCES AND YOU WON'T WANT TO MISS ONE--SO CHECK OUT THE POSSIBILITIES! PICK UP AN APPLICATION AND GET READY FOR GOD TO DO GREAT THINGS!!! WATCH FOR DETAILS ON THE SUMMER 2021 SWAT MISSION TRIP TO BE REVEALED ON DEC 2ND. WE WILL BE HAVING A BRIEF MEETING DIRECTLY AFTER SWAT.

## FUNDRAISERS:

SWAT LUNCHES (1 SUNDAY PER MONTH JAN-MAY), VANDE WALLE'S CANDY BARS, KWIK TRIP SCRIPT CARDS, AND THREADS OF HOPE ARE JUST A FEW OF THE WAYS STUDENTS CAN EARN MONEY TO HELP COVER THE COST OF THEIR SWAT MISSIONS TRIP. SWAT LUNCHES ARE A GREAT TIME OF FELLOWSHIP AS WELL AS A TIME TO EARN MONEY TOWARDS YOUR SUMMER MISSION TRIP.



# SWAT RULES

1. **EVERYBODY DOES WHAT EVERYBODY DOES:** YOU ARE REQUIRED TO ATTEND ALL MINISTRY ACTIVITIES UNLESS A LEADER SPECIFICALLY SAYS THERE ARE OPTIONS AVAILABLE.
2. LEADER'S WORD IS LAW. LEADERS MUST BE OBEYED AT ALL TIMES.
3. NO P.D.A. (PUBLIC DISPLAYS OF AFFECTION)
4. THE USE OF ENERGY DRINKS IS PROHIBITED
5. CELL PHONE USE IS PROHIBITED FOR THE FOLLOWING SWAT FUNCTIONS:
  - SUNDAYS FROM 10:20-11:30 FOR SWAT SUNDAY SCHOOL
  - WEDNESDAYS FROM 7:00-8:30 FOR THE SWAT EVENING PROGRAM
  - ALL RETREATS AND SPECIAL EVENTS UNLESS SPECIFIED

+++IF STUDENTS ARE FOUND USING THEIR CELL PHONE WHEN IT IS PROHIBITED, A LEADER HAS THE RIGHT TO CONFISCATE THE PHONE UNTIL THE EVENT IS OVER.+++
6. STUDENTS MUST REMAIN IN GROUPS OF 3 OR LARGER.
7. RESPECT THE PROPERTY OF CALVARY BIBLE CHURCH.
8. THE USE OF ANY ALCOHOL, TOBACCO, OR NON-AUTHORIZED DRUGS WILL RESULT IN AN IMMEDIATE PHONE CALL HOME SO YOU CAN BE PICKED UP.
9. UNWHOLESOME TALK SUCH AS SWEARING, PERVERSE OR DISCRIMINATORY LANGUAGE, AND "PUT-DOWNS" ARE PROHIBITED.

\*\*\*\*HAVE FUN\*\*\*\*

# MEET YOUR LEADERS!

MICHAEL HANSEN



DANA REMINGTON



BRIAN SMITH



DENISE HANSEN



TRACY MEYER



SHELLY SMITH



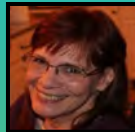
ALLEN LAST



DANNY OZSVATH



DEB PALMER



ZACH WALKUSH



JULIE ANDERSON



RON ANDERSON



TED HANSEN



AMBER LEWIS



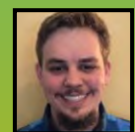
KRIS PETERSON



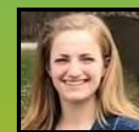
SARAH BARTH



BRIAN PALMER JR.



SAMI HANSEN



BRETT LEWIS



## SWAT in the Park

Every summer SWAT moves to a new location for the months of June-August. We move to Smith Park on Doty Island in Menasha. (620 Keyes St.)

From 7-8 pm we usually can be found playing ultimate Frisbee, but there are tons of other things to do as well. Sometimes this “hangout” time is simply used to catch up with friends. From 8-9 pm we meet back at the pavilion for a time of worship and a message. Good times and a lot of new faces at Smith Park.

And don't forget to have your student join us on Aug. 12th at 5:30 pm for our Freshmen Welcome Picnic!





# SWAT Fall Campout 2020

This year's SWAT Fall Campout will be September 11-13th at High Cliff State Park. We'll be taking the bus on Friday after school and enjoying a weekend full of fun outdoors with worship time around the campfire. We'll camp in tents at a group site and spend time hiking, exploring and enjoying God's creation! The cost will be \$35 for the whole weekend. We will arrive back at church mid-afternoon on Sunday. Watch for a flyer toward the end of the summer with more details.

## Things to know...

### Medical Release

You can pick one up at SWAT or Basic Training on Sundays or they are on the documents page of our church website and Facebook pages. We encourage you to get the two forms filled out and have your student bring it to SWAT or drop it at the CBC office as soon as you get the chance. You'll need it for any event your student wants to participate in off campus. We will keep them on file for 2 years and they will cover all the events. If you filled one out as a C-Teamer, these will follow your student up so no need to re-fill one out—unless Information has changed. If you filled out Medical Release forms for a mission trip—please be aware that these ARE NOT the same—they have different wording. If you have any questions about the forms please contact Michael or Da-

### Social Media

"SWAT\_CBC" - Facebook page

"SWAT Is Our Middle Name" Facebook Group is one of the primary ways we communicate with parents. We also post announcements and pics on our Instagram page

### Remind Texts

In order to effectively communicate with both students and parents, we have found texting to be one of the most practical ways. If you are interested in getting updates and reminders of SWAT events, goings on, cancellations and other important info, please let Michael or Dana know you'd like to be added to the text alerts for SWAT.



# WHAT CAN I EXPECT FROM A TYPICAL WEDNESDAY NIGHT AT SWAT?

SWAT STARTS AT 7 PM ALTHOUGH MANY STUDENTS DO COME TO HANG OUT EARLIER IN THE HALLWAY BY RM 112. WE ASK THAT ALL STUDENTS USE DOOR # 4.

ON ANY GIVEN NIGHT YOUR STUDENT CAN EXPECT TO PLAY A GAME, WATCH A FUNNY VIDEO, WORSHIP WITH OUR STUDENT-LED BAND AND LISTEN TO A MESSAGE FROM PASTOR MICHAEL OR A GUEST SPEAKER.

SWAT MESSAGES ARE A COMBINATION OF EXPOSITORY AND TOPICAL. SOME OF THE SUBJECT MATTERS ARE:

LOVE, SEX & DATING (*CHOICES, PURITY & BOUNDARIES*)  
WALKING THROUGH THE GOSPELS  
MEDIA (*MOVIES, SOCIAL MEDIA & MUSIC*)  
SCIENCE & GOD  
PSALMS/ PROVERBS

SWAT IS TYPICALLY FINISHED AROUND 9 PM. WE HAVE CANDY AND CHIPS AVAILABLE AT OUR SWAT CAFE. STUDENTS CAN BE PICKED UP ANYTIME BUT WE TYPICALLY CLOSE THE CHURCH AT 9:30 PM.

JOIN US FOR PARENT'S NIGHT ON OCT 21



**COST IS  
\$35**

**MEYER CABIN  
LAONA, WI  
APRIL 16-18, 2021**

**GUYS RETREAT**

**LADIES RETREAT**





# SnowBlast 2021

SNOWBLAST IS SWAT'S BIGGEST RETREAT OF THE YEAR! WE WILL BE TRAVELING UP TO LAKE LUNDGREN BIBLE CAMP JANUARY 29-31, 2021. SAVE THE DATE! IT'S A FANTASTIC WEEKEND OF SPIRITUAL GROWTH AND TONS OF WINTER FUN! THEY HAVE TUBING HILLS, BROOMBALL, CROSS COUNTRY SKIING, ICE SKATING AND SO MUCH MORE TO OFFER DURING OUR FREE TIME. A SPECIAL GUEST SPEAKER EACH YEAR AND WORSHIP MUSIC FROM OUR VERY OWN SWAT BAND! EACH YEAR WE OFFER A SPECIAL THEME AND ACTIVITIES FOR A TUBULAR WEEKEND! COST WILL BE \$105.



WE NEED STUDENTS HELP TO MAKE  
WEDNESDAYS RUN SMOOTHLY.  
SOUND BOARD  
WORSHIP TEAM  
SLIDE PROJECTION  
MC





Basic Training is SWAT's Sunday morning program for High School students. We meet in rooms 205/207 at 10:20am (during the 2nd service).

Each Sunday, we will take a deeper look at the passage that is shared on Wednesday nights. There will be time for group discussion, asking follow-up questions, and reviewing what we learned. By doing this, we will deepen our understanding of the Bible and take the time to turn knowing God into experiencing God.

Due to Covid-19 we have not offered our Basic Training Sunday-school class. We hope to begin this again soon!



**SUNDAYS  
10:20AM  
RM 205/207**

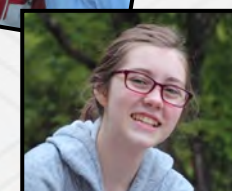
# BASIC TRAINING

## LADIES BIBLE STUDY

WHAT BETTER PLACE FOR LADIES TO CONNECT WITH EACH OTHER AND WITH GOD THAN AT BIBLE STUDY? JOIN US THIS FALL FOR OUR STUDY ON THE BOOK OF PHILIPPIANS AS WELL AS FUN ACTIVITIES!

THE LADIES BIBLE STUDY GROUP MEETS TWICE A MONTH, USUALLY SUNDAY NIGHTS FROM 6-830PM. LOCATIONS AND DATES ARE LISTED BELOW FOR THE FALL.

WE ADVERTISE ON THE "SWAT IS OUR MIDDLE NAME" FACEBOOK PAGE AND INSTAGRAM, AS WELL AS EVERY WEDNESDAY NIGHT. WE ALSO SEND OUT MASS TEXT MESSAGES THROUGH REMIND. PLEASE SIGN UP IF YOU WOULD LIKE TO BE INCLUDED ON THESE TEXTS.



SEPT 20  
OCT 4  
OCT 18  
NOV 8  
NOV 15  
DEC 6  
DEC 20

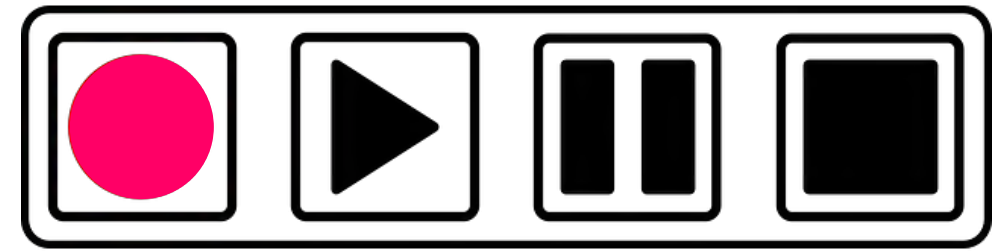


# GUYS BIBLE STUDY

THIS FALL, JOIN OUR GUYS AS THEY  
LEARN THE IMPORTANCE OF  
DISCIPLESHIP THROUGH STUDYING  
THE SCRIPTURES, PRAYING FOR  
EACH OTHER, EATING TOGETHER,  
AND INVITING OTHERS TO JOIN US!

WE MEET FROM 6:01 - 8:32 ON THE  
SUNDAY EVENINGS LISTED BELOW.  
LOOK FOR FACEBOOK, INSTAGRAM,  
AND REMIND TEXTS FOR UPDATES!

SEPT 20	NOV 8
OCT 4	NOV 15
OCT 18	DEC 6
	DEC 20



# swat challenge

*invest, earn, repeat*

we are excited to offer a fundraising opportunity for  
swat events! the swat challenge is something you can  
pick up any wednesday and begin  
working on. just grab a challenge and follow the  
directions! your student will be encouraged to pray,  
read, memorize and journal for \$10 per month off a  
retreat or mission trip.

pray for 10 people  
throughout the month  
and make sure they  
know!

5 days of scripture  
reading  
using f-260 bible  
reading plan

memorize a favorite  
passage

1 hear journal per week  
highlight  
explain  
apply  
response



# SWAT CALENDAR

SUNDAY	MONDAY	TUESDAY	WEDNESDAY	THURSDAY	FRIDAY	SATURDAY
SUMMER ESCAPE	Shelly's Birthday 11	11	Freshman WELCOME PICNIC	13	14	15
BIBLE STUDIES	17	18	swat	AUGUST	AUGUST	22
23	24	25	swat	27	28	29
30	31	1	NO SWAT	Danny's Birthday	4	5
6	HAPPY LABOR DAY	8	swat	10	swat campout	
	14	15	swat	SEPTMBER		
BIBLE STUDIES	21	22	SEE YOU AT THE Q	24	25	26
27	28	29	MUSTACHE NIGHT	1	2	3
BIBLE STUDIES	5	6	Hayride & BONFIRE	8	9	THE AMAZING RACE
11	OCTOBER	OCTOBER	swat	15	16	17
BIBLE STUDIES	19	20	Hello PARENTS	22	23	Tracy's Birthday
Julie's Birthday	26	27	swat	29	FALL WORK WEEKEND	
	2	3	Glow In Dark Night	Amber's Birthday	6	7
BIBLE STUDIES	9	10	CHANGE WARS START	12	13	14
BIBLE STUDIES	16	17	swat	19	Brian P.'s Birthday	21
NOVEMBER	NOVEMBER	NOVEMBER	NO SWAT	HAPPY Thanksgiving	27	28
Pancake Breakfast	30	1	MISSIONS INFO MTG	3	4	5
BIBLE STUDIES	7	8	swat	10	11	12
13	14	15	ADOPT-A-FAMILY CHRISTMAS PARTY	DECEMBER		
Christmas PARTY	21	22	NO SWAT	Christmas Eve		26
27	28	29	NO SWAT	31	HAPPY NEW YEAR	2